



# ARALCO REMOTE DESKTOP SERVICES AND REMOTE APPLICATIONS

## ARALCO CLOUD WORKSPACES

Remote desktop workspaces and remote applications help businesses decrease expenses and increase efficiency

### About Aralco

Aralco Retail Systems has been in operation in Canada since 1982 with a primary focus on inventory control and retail management software including point of sale (POS), Back Office and administration software design, data processing, database design, consulting, custom software development, installation, training and support.

Whether you're in the business of apparel, furniture, grocery, plumbing, manufacturing or retail services where charges are by the hour, Aralco's Software solution ensures retail and wholesale businesses have all the necessary tools to succeed in the global marketplace.

### Microsoft Remote Desktop Session Based Deployment

Remote Desktop Services from Aralco will enable you to connect to a Microsoft Remote desktop session-based deployment using a number of different methods on practically any device (PC, thin client, Smartphone, tablet) as long as you have an internet connection. The workspace you access is located on a virtual machine located in the Aralco cloud, in Canadian Tier 3 data centers. You can install multiple desktop workspaces on one deployment, which will result in the reduction of overall management of the clients' infrastructure, with fully managed backup and perimeter security. This solution provides a number of end user benefits:

#### Mobility

Potential to work from any device that has a remote desktop client or web browser.

#### Scalability

Provides a simplified deployment that can be centrally managed and scaled up or down at a very predictable per user rate

#### Cost Efficiency

No need to forecast hardware/processing requirements to account for potential future growth, with Aralco Remote Desktop workspaces scale your requirements as you need them within minutes.

#### Performance

The Aralco Cloud infrastructure is built with high performance in mind, leveraging the continued evolution and enhancements of cloud infrastructure.



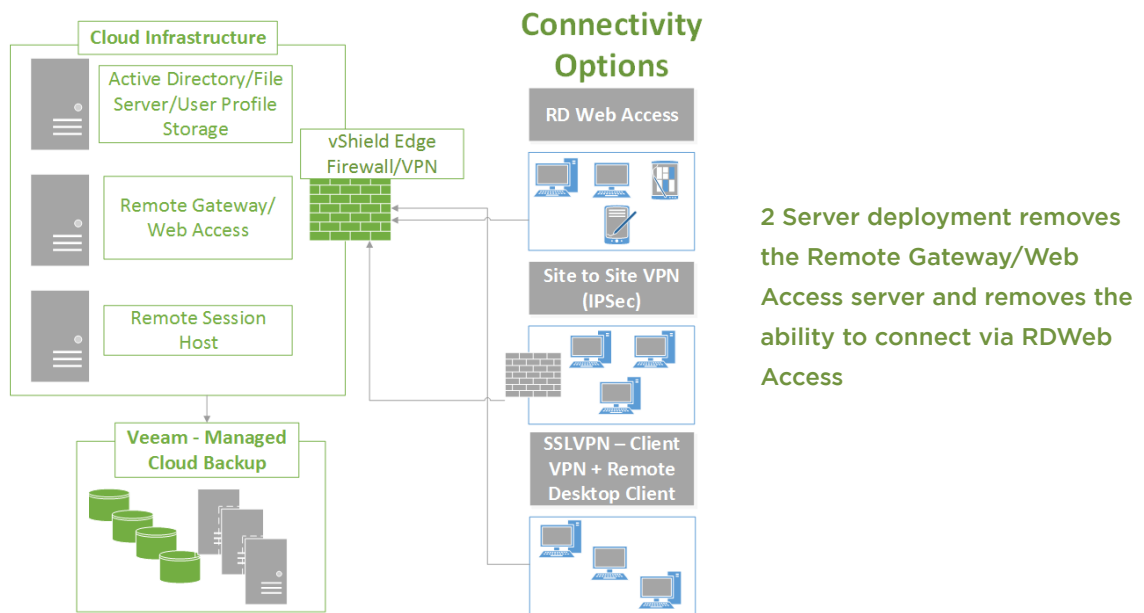
Microsoft Remote Desktop Session Based Deployments

**BASIC**

2 Virtual Machines (5-20 users)  
 1 Session Host (4vCPU, 8GB RAM, 150 GB OS Disk)  
 1 Active Directory Server (2vCPU, 4GB RAM, 80 GB OS Disk, 200 GB Production HDD)  
 Access methods: RDP Only (Client VPN and/or IP restricted RDP and/or IPSec VPN (For office locations only))  
 Administrator Account  
 5 Remote Desktop Licenses  
 vShield Edge Firewall (Includes up to 5 IPSec VPNs and 5 SSL VPN Clients)  
 Veeam Backup & Replication  
 250 GB Backup Storage  
 When an additional user is added over and above the minimum 5 users the following elements are added  
 0.25 vCPU (1vCPU is applied on the first of four additional users), 1GB RAM, Remote Desktop License, 1 SSL VPN Client, 25GB Production Storage and 10 GB backup storage

**STANDARD**

3 Virtual Machines (15-50 users)  
 1 Session Host (4vCPU, 8GB RAM, 150 GB OS Disk)  
 1 Active Directory Server (2vCPU, 4GB RAM, 80 GB OS Disk, 750 GB Production HDD)  
 1 Remote Gateway/Web Access Virtual Machine (4vCPU, 8GB RAM, 150 GB OS Disk)  
 Access methods: RDP/Client VPN, IPSec VPN (For office locations only), Remote Gateway Web Access  
 Administrator Account  
 15 Remote Desktop Licenses  
 vShield Edge Firewall (Includes upto 5 IPSec VPNs and 15 SSL VPN Clients)  
 Veeam Backup & Replication - Enterprise Plus (3VM Licenses)  
 500 GB Backup Storage  
 When an additional user is added over and above the minimum 15 users the following elements are added  
 0.25 vCPU (1vCPU is applied on the first of four additional users), 1GB RAM, Remote Desktop License, 1 SSL VPN Client, 25GB Production Storage and 10 GB backup storage



## Microsoft Remote Desktop Session Based Deployments

## ADVANCED

5 Virtual Machines (40-100 users)  
 2 Session Hosts (4vCPU, 10GB RAM, 80 GB OS Disk)  
 1 Active Directory Server (2vCPU, 4GB RAM, 80 GB OS Disk, 1250 GB Production HDD)  
 1 Remote Gateway/Web Access Virtual Machine (4vCPU, 8 GB RAM, 80 GB OS Disk)  
 1 Remote Desktop Connection Broker (4vCPU, 8GB RAM, 80 GB OS Disk)  
 Access methods: RDP/Client VPN, IPSec VPN (office locations), Remote Gateway Web Access  
 Administrator Account  
 40 Remote Desktop Licenses  
 vShield Edge Firewall (Includes up to 10 IPSec VPNs and 40 SSL VPN Clients)  
 Veeam Backup & Replication - Enterprise Plus (5VM Licenses)  
 750 GB Backup Storage  
 When an additional user is added over and above the minimum 40 users the following elements are added  
 .25 vCPU (1vCPU is applied on the first of four additional users), 1GB RAM, Remote Desktop License, 1 SSL VPN Client, 25GB Production Storage and 10 GB backup storage

